



# ARD SERIES

10 to 100kA, 0.28 to 6kV  
Case Metal Oxide Varistor



## Features

- High Surge Rating
- Meets IEC 600 99-4 & IEEE C62.11

## Specifications<sup>1</sup>

Part Number	V <sub>R</sub> kV	V <sub>REF</sub> kV	V <sub>RES</sub> RATIO <sup>2</sup> kV	I <sub>IMP1</sub> <sup>2</sup> kA	I <sub>IMP2</sub> <sup>2</sup> A	MCOV kV	I <sub>R</sub> μA	D <sub>MAX</sub> mm	T <sub>MAX</sub> mm
ARD32X3	0.28	0.6 to 0.8	1.63	10	75	0.22	150	32±1	3±0.2
ARD32X6	0.50	1.2 to 1.6	1.63	10	75	0.40	150	32±1	6±0.3
ARD32X21	3.00	4.3 to 4.9	1.68	65	150	2.40	150	32±1	21±0.5
ARD32X31	4.50	6.4 to 7.0	1.68	65	150	3.60	150	32±1	31±1
ARD32X42	6.00	9.6 to 10.4	1.68	65	150	4.80	150	32±1	42±1
ARD35X3	0.28	0.6 to 0.8	1.63	10	75	0.22	150	35±1	3±0.2
ARD35X6	0.50	1.2 to 1.6	1.63	10	75	0.40	150	35±1	6±0.3
ARD35X21	3.00	4.3 to 4.9	1.67	65	200	2.40	150	35±1	21±0.5
ARD35X31	4.50	6.4 to 7.0	1.67	65	200	3.60	150	35±1	31±1
ARD35X42	6.00	8.4 to 9.2	1.67	65	200	4.80	150	35±1	42±1
ARD40X21	3.00	4.3 to 4.9	1.75	100	300	2.40	160	40±1	21±0.5
ARD40X31	4.50	6.4 to 7.0	1.75	100	300	3.60	160	40±1	31±1
ARD46X21	3.00	4.3 to 4.9	1.75	100	550	2.40	170	46±1	21±0.5
ARD46X31	4.50	6.4 to 7.0	1.75	100	550	3.60	170	46±1	31±1
ARD48X21	3.00	4.3 to 4.9	1.75	100	600	2.40	170	48±1	21±0.5
ARD48X31	4.50	6.4 to 7.0	1.75	100	600	3.60	170	48±1	31±1
ARD52X21	3.00	4.3 to 4.9	1.74	100	650	2.40	180	52±1	21±0.5
ARD52X31	4.50	6.4 to 7.0	1.74	100	650	3.60	180	52±1	31±1
ARD62X21	3.00	4.3 to 4.9	1.68	100	800	2.40	200	60±1	21±0.5
ARD62X31	4.50	6.4 to 7.0	1.68	100	800	3.60	200	60±1	31±1

<sup>1</sup>Device data taken at 25°C.

<sup>2</sup>Check Specifications Definitions for conditions details.

-Typical response time is less than 15 nanoseconds.

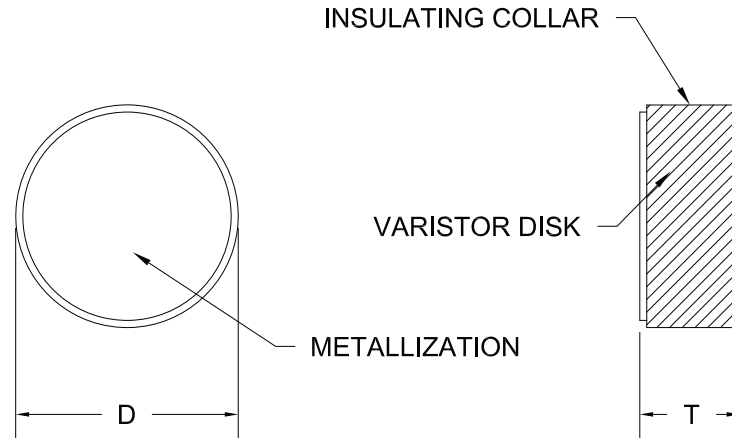
- Arrester discs may be used in porcelain or silicon rubber housing; medium can be air or SF6 or equivalent.

Temperature °C	
Operating Temperature	-55 to 125
Storage Temperature	-55 to 125



**Drawings and Curves**

**Outline and Dimensions**



**Specification Definitions**

Specifications		Conditions
<b>V<sub>R</sub></b>	Maximum Rated Voltage	-
<b>V<sub>REF</sub></b>	DC Reference Voltage	U <sub>R</sub> @ 1mA
<b>V<sub>RES RATIO</sub></b>	Maximum Residual Voltage Ratio	At 1.5kA, 8x20 μs Pulse (ARD32X3, ARD32X6, ARD35X3, ARD35X6) At 5kA, 8x20 μs Pulse (ARD32X21, ARD32X31, ARD35X21, ARD35X31, ARD35X42) At 10kA, 8x20 μs Pulse (All other models)
<b>I<sub>IMP1</sub></b>	Maximum Current Impulse Withstand	At 4x10 μs Pulse
<b>I<sub>IMP2</sub></b>	Maximum Long Duration Current Pulse	At 2ms
<b>MCOV</b>	Maximum Continuous Output Voltage	-
<b>I<sub>R</sub></b>	Maximum Leakage Current	At MCOV
<b>D<sub>MAX</sub></b>	Maximum Diameter	-
<b>T<sub>MAX</sub></b>	Maximum Thickness	-

Note: Specifications subject to change without notice. Photo is representation only.

